



Social Sciences and Humanities
Research Council of Canada

Conseil de recherches en
sciences humaines du Canada

Canada

RESEARCH FOR SOCIAL IMPACT: SSHRC'S STORY

AESIS - SOCIETAL IMPACT OF SCIENCE 2023 WEBINAR

SYLVIE A. LAMOUREUX, O.Ont., PHD, VICE-PRESIDENT, RESEARCH | VICE-PRÉSIDENTE, RECHERCHE

MARCH 14, 2023
14 MARS 2023

Canadian Funding Agency Landscape

3 Federal agencies mandated to promote and support research and training

CIHR – Canadian Institutes of Health Research

NSERC – Natural Sciences and Engineering Research Council of Canada

SSHRC – Social Sciences and Humanities Research Council

<https://www.sshrc-crsh.gc.ca/>

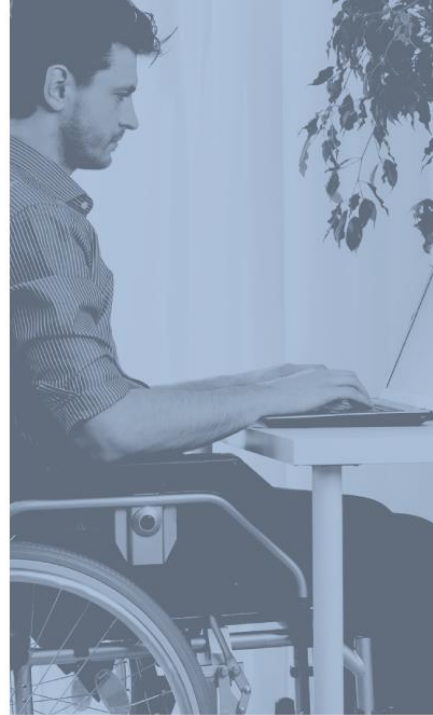


Social Sciences and Humanities Research Council of Canada

Federal agency mandated to promote and support research and training in the social sciences and humanities

Through programs, collaborations and knowledge mobilization activities SSHRC:

- **Trains** the next generation of talented, creative thinkers and doers
- **Builds** knowledge and understanding about people, cultures and societies
- **Drives** the innovations that address the challenges of today and tomorrow



SOCIETAL IMPACT AND FUNDING OPPORTUNITIES



Social Sciences and Humanities
Research Council of Canada

Conseil de recherches en
sciences humaines du Canada

Canada

FUNDING OPPORTUNITIES @ SSHRC

RESEARCH TRAINING AND TALENT DEVELOPMENT

Building the next generation of leaders and equipping them for research-intensive careers across the economy and society

INSIGHT RESEARCH

Fostering research-based knowledge about people

RESEARCH PARTNERSHIPS

Supporting the flow and exchange of that knowledge within and beyond academe.

PARTNERSHIPS

Within the academic community and between academia, industry, government, not-for-profits, and communities

- Partnership Development Grants
- Partnership Grants
- Partnership Engage Grants

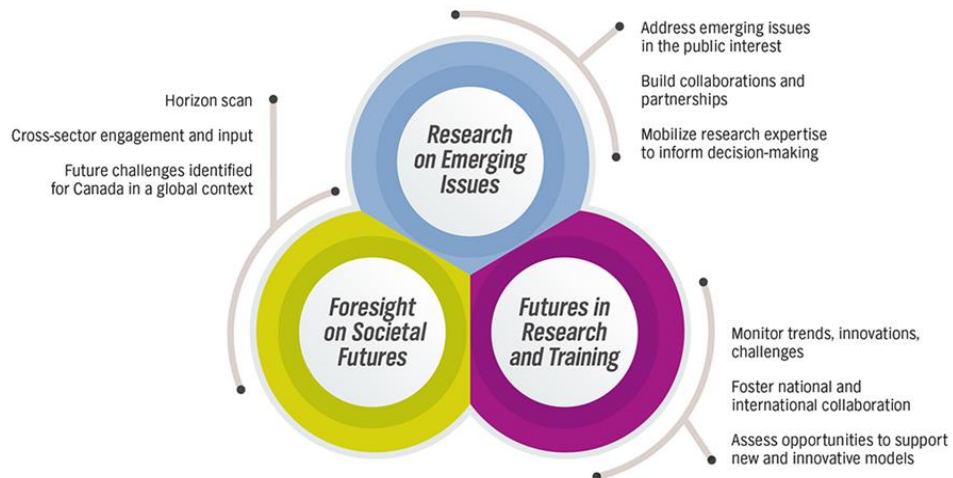
SSHRC ADMINISTERED TRI-AGENCY FUNDING PROGRAMS (TIPS)

**SUPPORT FOR GRADUATE STUDENTS AND
POSTDOCTORAL FELLOWS**

SUPPORT FOR RESEARCHERS

SUPPORT FOR INSTITUTIONS

[Tri-agency funding programs \(sshrc-crsh.gc.ca\)](https://sshrc-crsh.gc.ca)



IMAGINING CANADA'S FUTURE

2022-2025 THEMES

- **Shifting Dynamics of Privilege and Marginalization**
- **Evolving Narratives of Cultures and Histories**
- **Global Health and Wellness for the 21st Century**
- **Envisioning Governance Systems that Work**



**IMAGINING
CANADA'S
FUTURE**

BEYOND KNOWLEDGE MOBILIZATION



Social Sciences and Humanities
Research Council of Canada

Conseil de recherches en
sciences humaines du Canada

Canada

Knowledge shapes policy

Read the evidence briefs linked to Knowledge Synthesis Grants on the themes of:

- Mobility and Public Transit
- Skills and Work in the Digital Economy
- Living Within the Earth's Carrying Capacity

www.sshrc-crsh.gc.ca/evidencebriefs

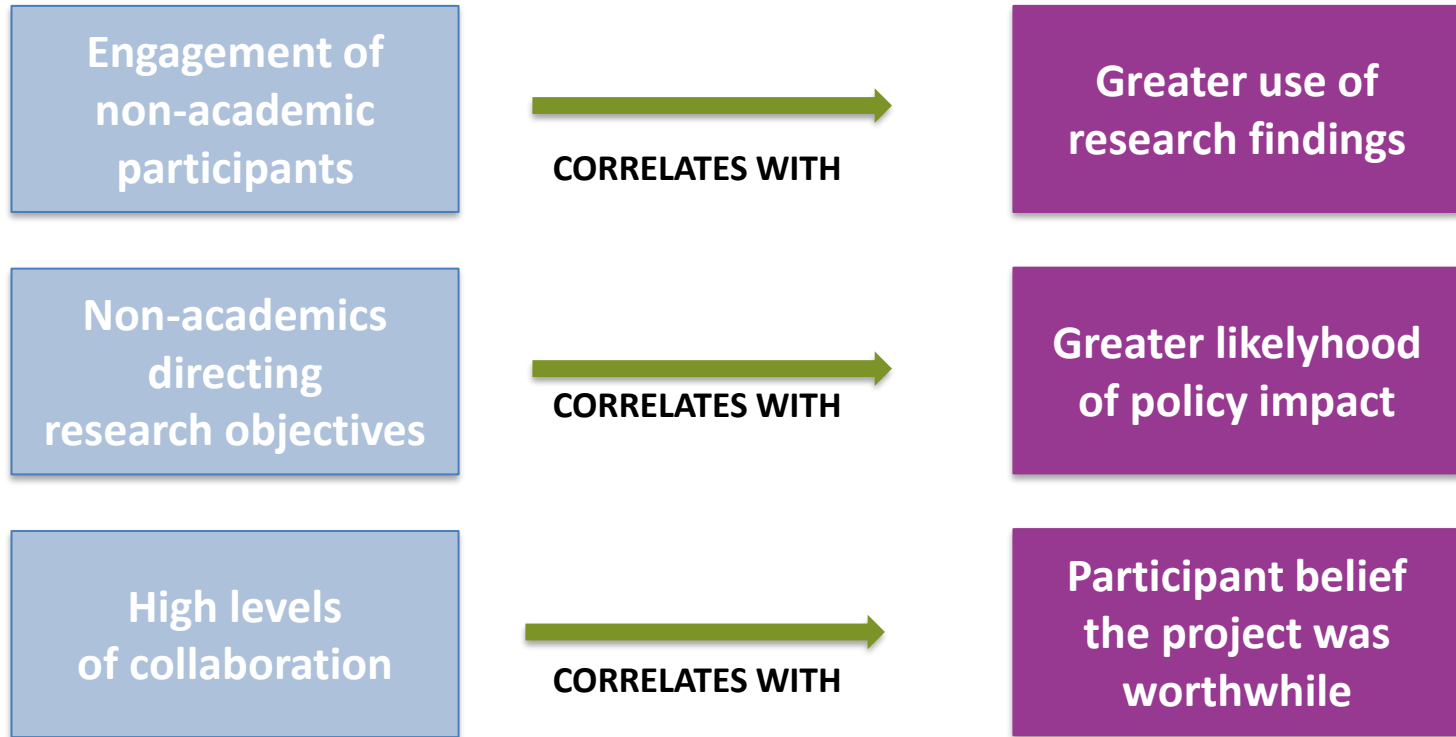


Social Sciences and Humanities
Research Council of Canada

Conseil de recherches en
sciences humaines du Canada

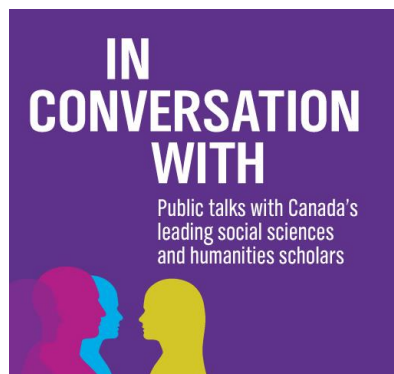
Canada

GENUINE COLLABORATIONS WITH NON-ACADEMICS LEAD TO POSITIVE OUTCOMES*



*Evaluation of SSHRC partnership funding opportunities 2018

CONNECTING WITH SOCIETY



AN **INCLUSIVE** RESEARCH ECOSYSTEM



Social Sciences and Humanities
Research Council of Canada

Conseil de recherches en
sciences humaines du Canada

Canada

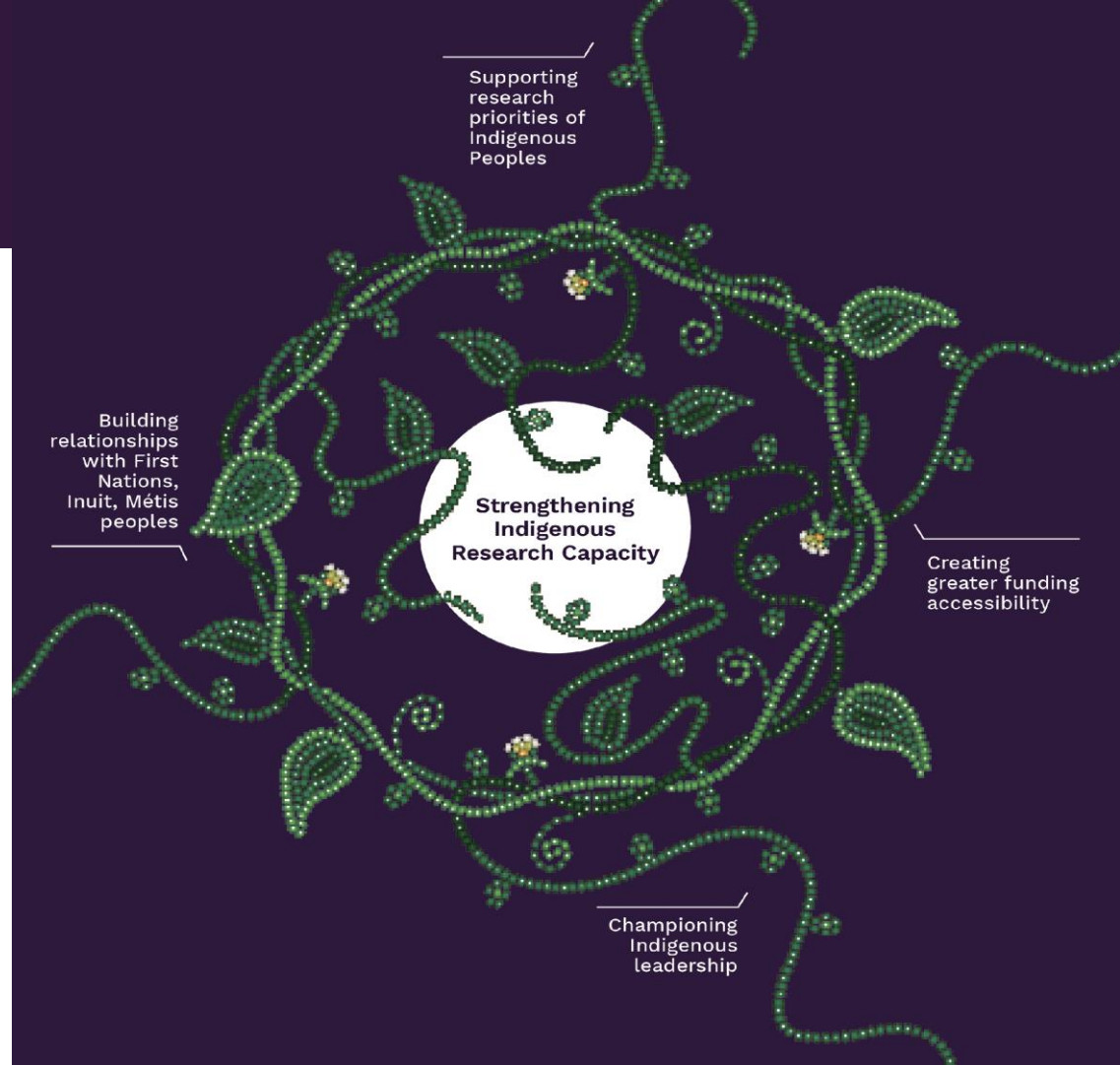
STRENGTHENING INDIGENOUS RESEARCH CAPACITY

- *A priority of the Canada Research Coordinating Committee to advance reconciliation and help build Indigenous research capacity by working with Indigenous communities to develop and support new models for Indigenous research and research training*



Strategic Directions & Guiding Principles

- SELF-DETERMINATION
- DECOLONIZATION OF RESEARCH
- ACCOUNTABILITY
- EQUITABLE ACCESS



DESIGNING INCLUSION INTO SSHRC'S PROGRAMS AND ORGANIZATIONAL CULTURE. EDI IS

BUILT INTO OUR FUNDING OPPORTUNITIES:

- MERIT REVIEW PANELS
- COMMON CV
- EVALUATION

BUILT INTO OUR POLICIES, STRUCTURE, AND GOVERNANCE:

- INDIGENOUS LEADERSHIP CIRCLE IN RESEARCH
- ANTI-BLACK RACISM
- EDI

**REFRAMING 'SOCIETAL IMPACT' TO INCLUDE :
RESEARCH INFORMED BY LIVED EXPERIENCE,
REFLECTING DIVERSITY OF POPULATION**

STAY CONNECTED WITH SSHRC

- Visit our website: www.sshrc-crsh.gc.ca
- Subscribe to our eNewsletter: **Dialogue**
- Follow @SSHRC and @TIPS_SPIIE



@SSHRC_CRSH



FACEBOOK



YOUTUBE



@SSHRC_CRSH



LINKEDIN



MIIGWECH MERCI / THANK YOU!

SYLVIE A. LAMOUREUX

VICE-PRÉSIDENTE RECHERCHE | VICE-PRESIDENT, RESEARCH

SYLVIE.LAMOUREUX@SSHRC-CRSH.GC.CA



Social Sciences and Humanities
Research Council of Canada

Conseil de recherches en
sciences humaines du Canada

Canada